



# **College Station Utilities**

*Reliable, Affordable, Community Owned*

## **Update on CSU's Street Light Monitoring System**

Presented by :

**Timothy R. Crabb, P.E.**

**Assistant Director of Electric Utilities**

# COCS Monitoring System History

- *Initial investigation into street light outages started in 2007*
- *RFP put out by City in August, 2008*
- *Two responses received on RFP in September, 2008*
- *Selected to pursue ROAM proposal in December, 2008*
- *Installed 2000 ROAM nodes and new bulbs in 2000 Thoroughfare Lights in April, 2009*
- *Added 850 lights to system through March 2010*
- *Added 800 additional lights in April 2010, complete system by September 2010*



Dashboard

Maps

Reporting

History




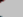
Scheduling

Work Order

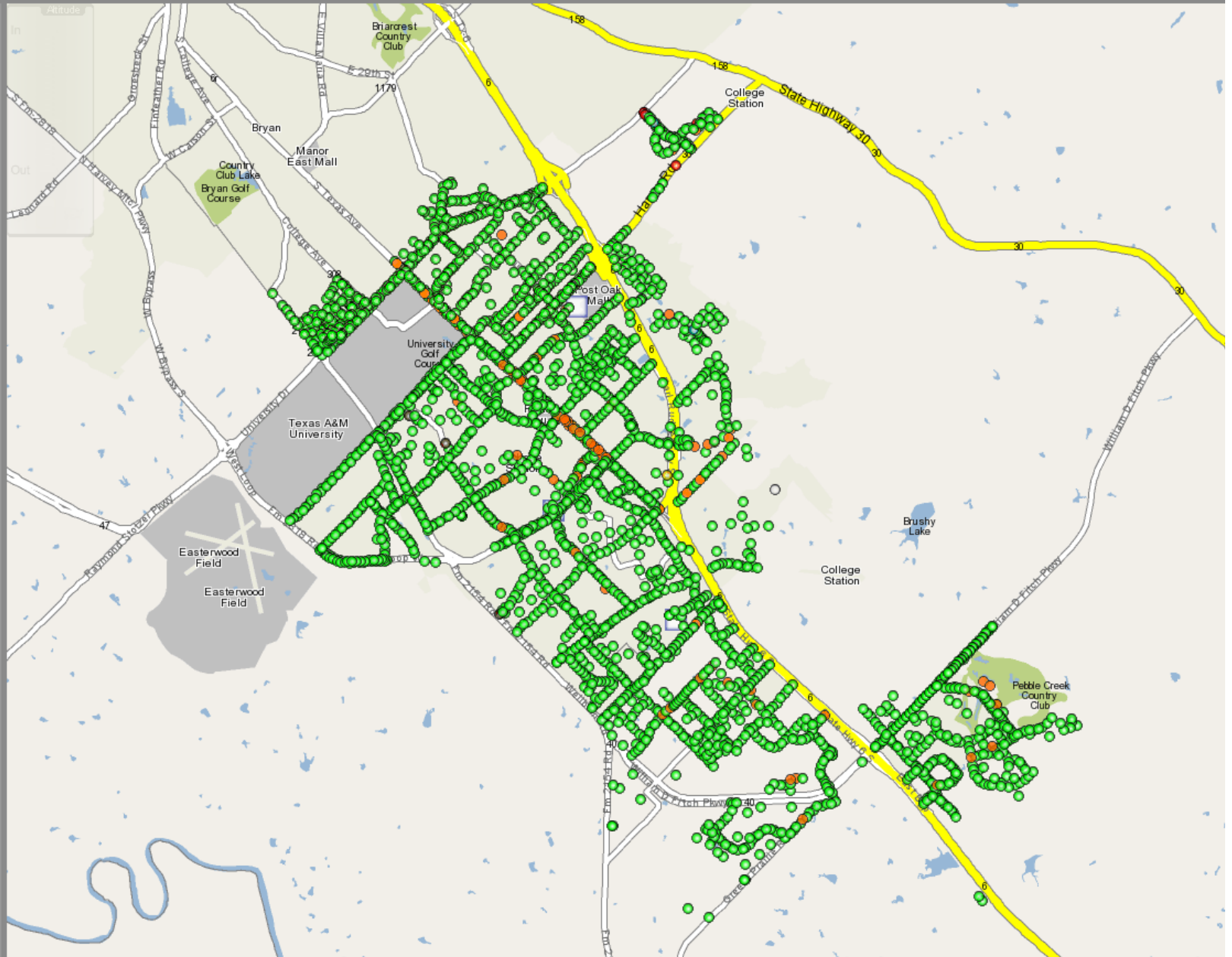
Groups

Filters

### Diagnostic

-  Fully Operational
-  Operational with Issues
-  Fixture Malfunction
-  Low Wattage
-  Unspecified Malfunction
-  No Communication
-  Partial Report
-  Unregistered
-  No Power At Activation

Historical Operation Status  
Work Order Tracking  
Work Order Management



Information



Dashboard

Maps

Reporting

History

Scheduling

Work Order

Groups

Filters

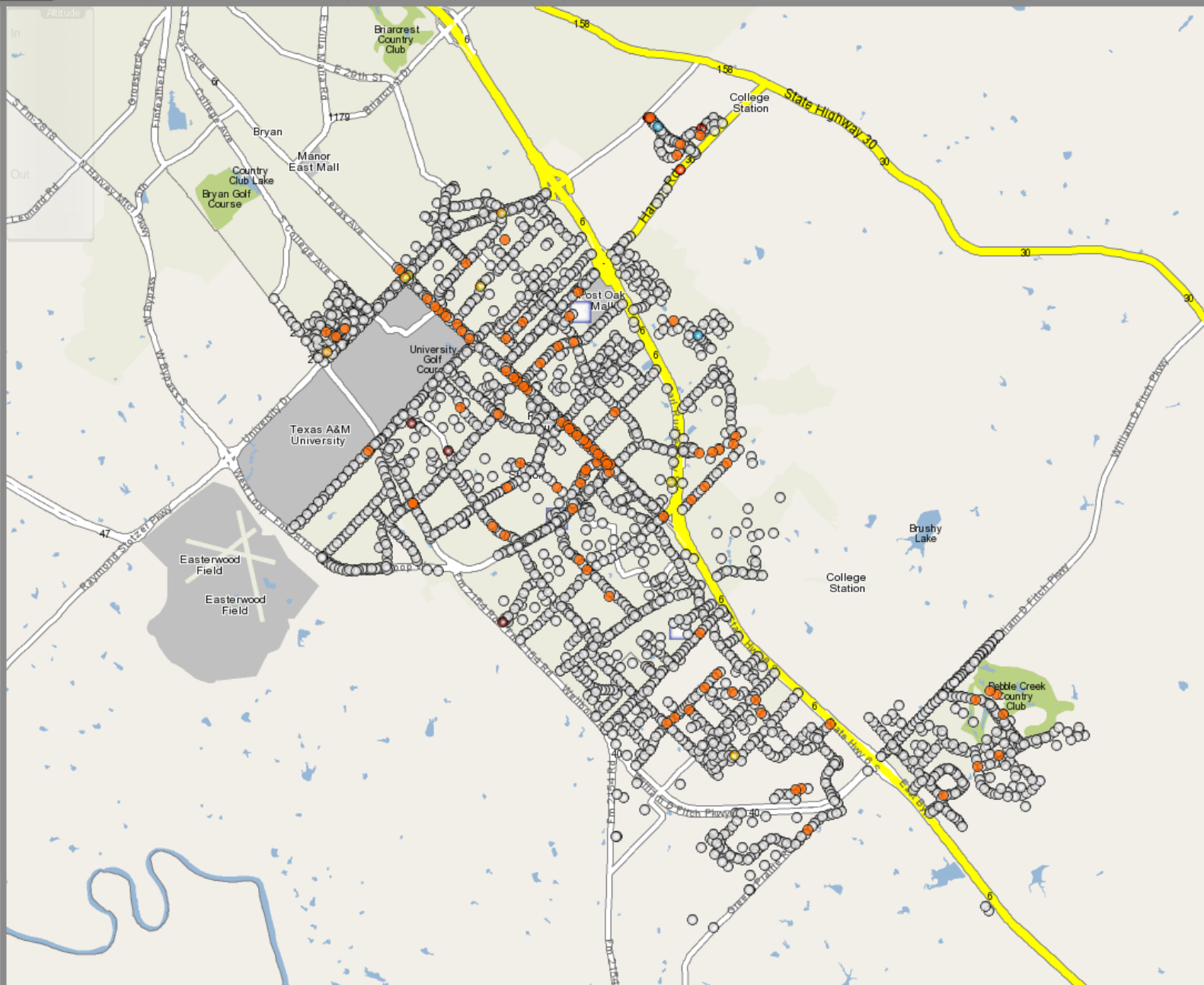
### Diagnostic

- Fully Operational
- Operational with Issues
- Fixture Malfunction
- Low Wattage
- Unspecified Malfunction
- No Communication
- Partial Report
- Unregistered
- No Power At Activation

Historical Operation Status  
Work Order Tracking  
Work Order Management

Information

Current Time: 8:10:34 AM





Dashboard

Maps

Reporting

History

Scheduling

Work Order

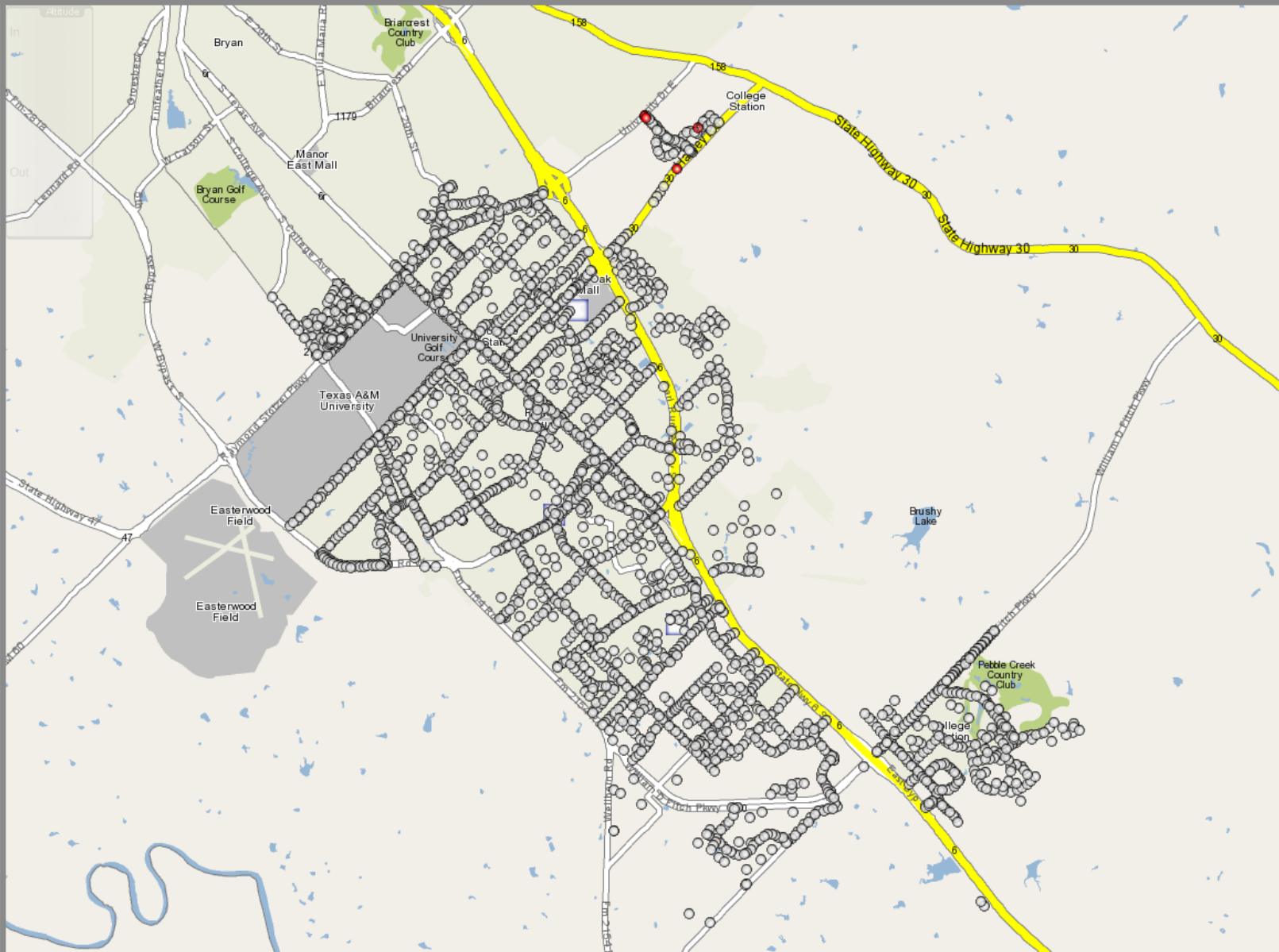
Groups

Filters

**Diagnostic**

- Fully Operational
- Operational with Issues
- Fixture Malfunction
- Low Wattage
- Unspecified Malfunction
- No Communication
- Partial Report
- Unregistered
- No Power At Activation

- Historical Operation Status
- Work Order Tracking
- Work Order Management



http://ww2.roamportal.net/main.asp - Microsoft Internet Explorer

File Edit View Favorites Tools Help

Back Forward Stop Refresh Home Search Favorites RSS Print Mail New Tab Bluetooth

Address http://ww2.roamportal.net/main.asp Go

Google Search Bookmarks Find Check AutoFill dastew...

**ROAM** Dashboard Maps Reporting History Work Order Groups

Installation  
College Station  
 Show All Installations

Information  
Current Time: 7:27:49 AM  
Logged in as: dstewart  
Current Bookmark: College Station

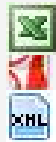
**Dashboard for College Station**  
Current Date: 05/05/2009 14:38:35

Total	Normal Operation	Operational with Issues	Fixture Malfunction	NoComm	Unspecified Malfunction	Partial Report	Activation	Low Wattage
1998	1691	19	54	9	8	20	55	142

84.63%

- Normal Operation
- Operational with Issues
- Fixture Malfunction
- Unspecified Malfunction
- No Comm
- Partial Report
- Activation
- LowWattage

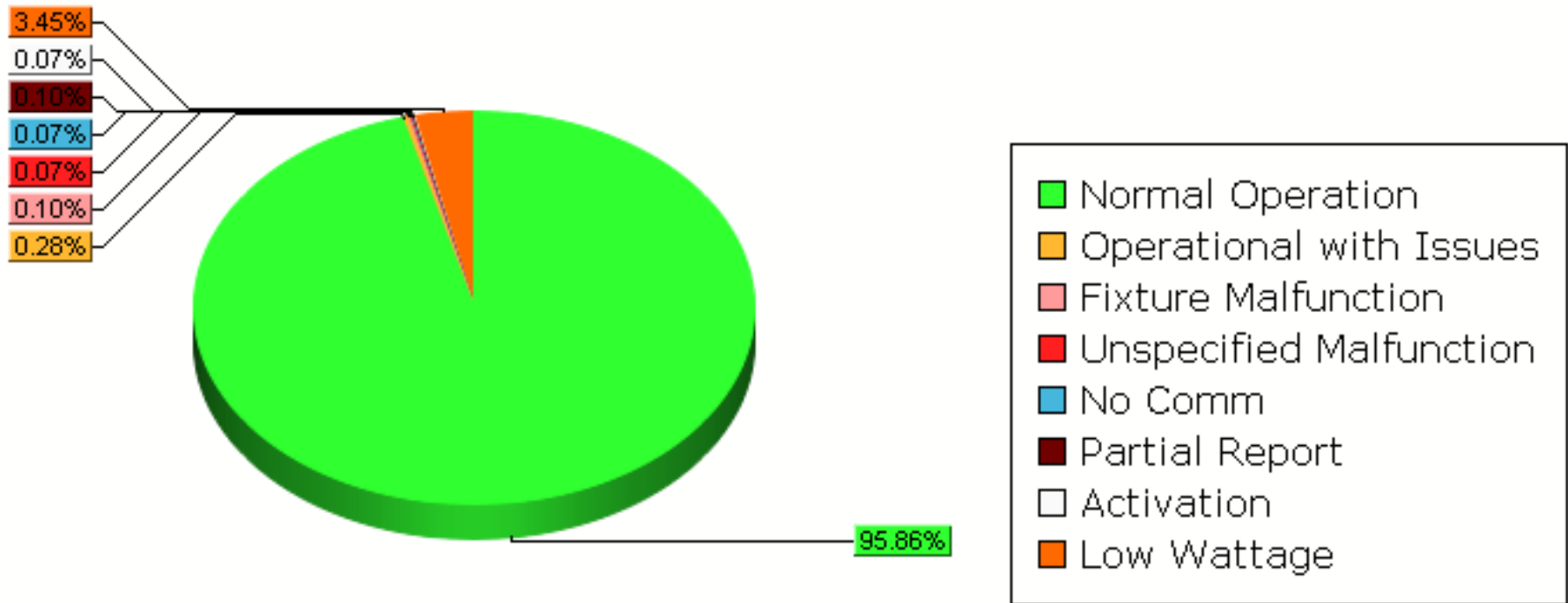
Refresh



# Dashboard for College Station

Current Date: 03/29/2010 09:03:29  
Selected Date: 03/28/2010

Total	Normal Operation	Operational with Issues	Fixture Malfunction	NoComm	Unspecified Malfunction	Partial Report	Activation	Low Wattage
2872	2753	8	3	2	2	3	2	99



# Process Decisions/Events

- *Decision to eliminate Button Eye Photo Controls*
- *Decision to deploy in smaller quantities.*
- *Adjustments made to security and access to the system by Roam.*
- *Continuing study of node “lockups” due to lightning storms.*

# Summary

- *COCS is very satisfied with the ROAM system.*
- *Think through your deployment plan and match this to your resources.*
- *Cost savings can pay for the system (patrolling, maintenance, power cost, .....).*
- *Understand the “Green” benefits of a Monitoring System.*
- *No matter what else you do to your system (LED’s, Induction Lights,...), a Street Light Monitoring System is the only way you can ensure that you know when your lights are on!*

*Questions?*



## STRIKENet Report 236345

Report Title: CollegeStation20090719

Total Lightning Strokes Detected: 1282

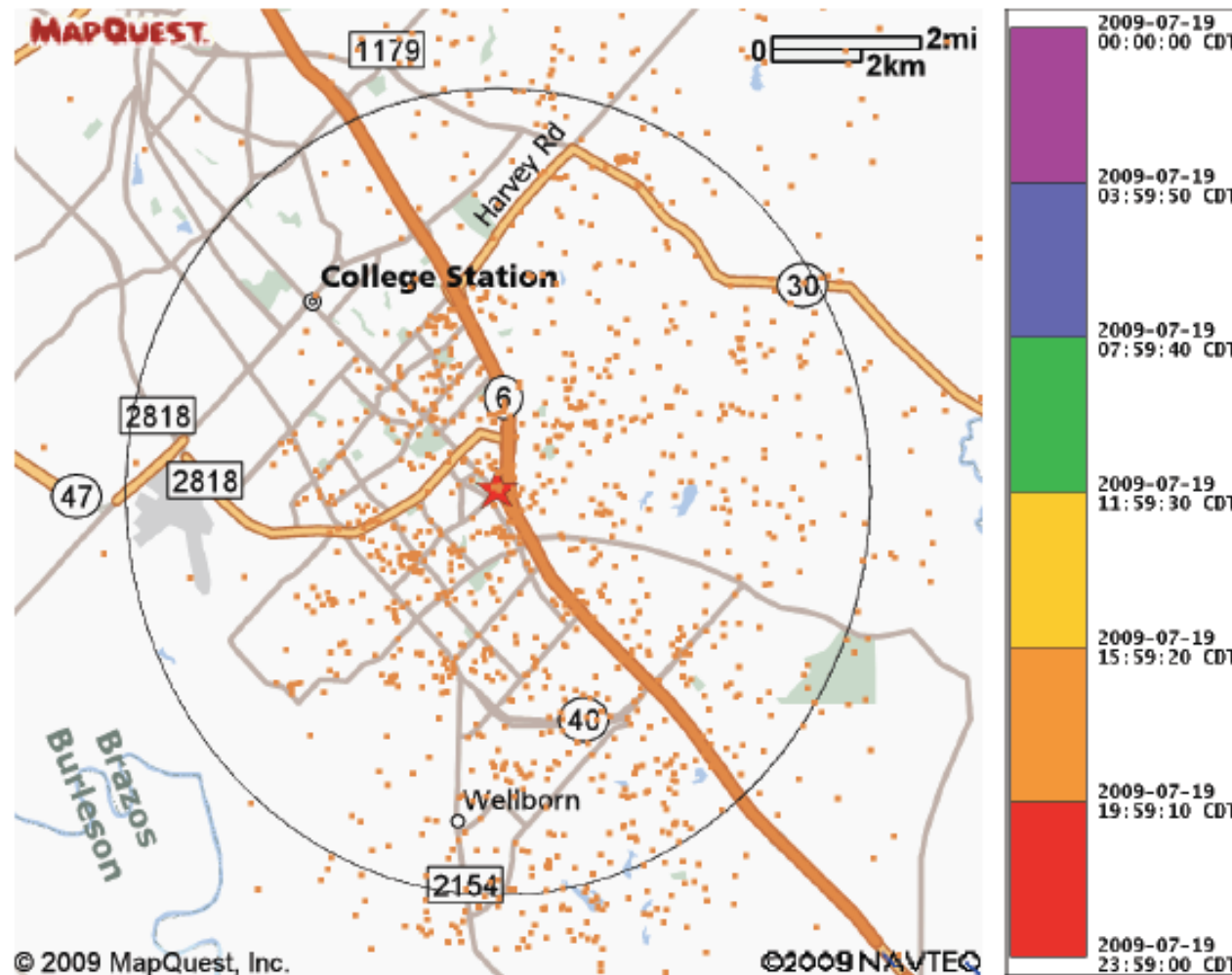
Lightning Strokes Detected within 5 mi/8 km radius: 936

Lightning Strokes Detected beyond 5 mi/8 km whose confidence ellipse overlaps the radius: 346

Search Radius: 5 mi/8 km

Time Span: Jul 19, 2009 12:00:00 AM US/Central to Jul 19, 2009 11:59:00 PM US/Central

### Location Points For Lightning Strokes



Lightning data provided by Vaisala's NLDN® and/or Environment Canada's CLDN.

## STRIKENet Report 236611 Redo of 236345

Report Title: CollegeStation20090720

Total Lightning Strokes Detected: 762

Lightning Strokes Detected within 5 mi/8 km radius: 610

Lightning Strokes Detected beyond 5 mi/8 km whose confidence ellipse overlaps the radius: 152

Search Radius: 5 mi/8 km

Time Span: Jul 20, 2009 12:00:00 AM US/Central to Jul 20, 2009 11:59:00 PM US/Central

### Location Points For Lightning Strokes

